

规格书编号：

SPEC NO：

产品规格书

SPECIFICATION

CUSTOMER 客户： _____
PRODUCT 产品： _____ SAW FILTER _____
MODEL NO 型号： _____ HDF294A21 _____
PREPARED 编制： _____ CHECKED 审核： _____
APPROVED 批准： _____ D A T E 日期： _____ 2013-1-6 _____

客户确认 CUSTOMER RECEIVED:		
审核 CHECKED	批准 APPROVED	日期 DATE

无锡市好达电子有限公司
Shoulder Electronics Limited

更改历史记录 History Record

更改日期 Date	规格书编号 Spec. No.	产品型号 Part No.	客户产品型号 Customer No.	更改内容描述 Modify Content	备注 Remark

1. SCOPE

This specification shall cover the characteristics of SAW filter with HDF294A21 used for the page system.

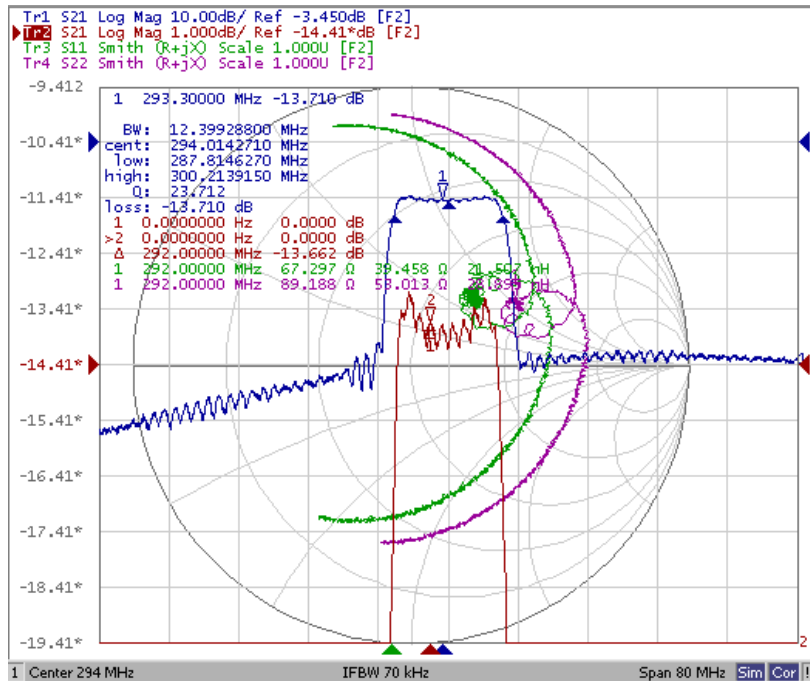
2. ELECTRICAL SPECIFICATION

Maximum Input Power	+10dBm
DC voltage	10V
Storage Temperature Range	-55°C to +125°C
Operation Temperature Range	-45°C to +125°C

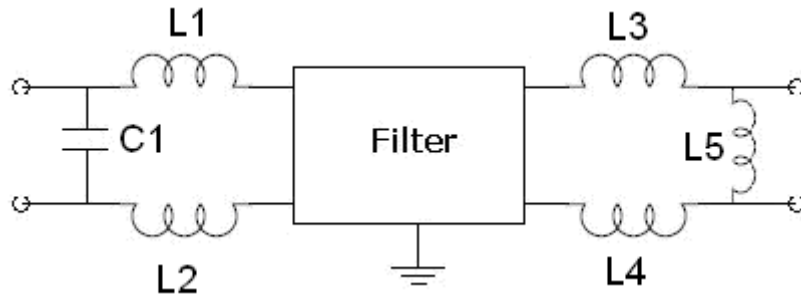
Electronic Characteristics

Parameter	Min	Typ	Max	Units
Center Frequency	293.8	294.0	294.2	MHz
Insertion Loss	-	14.0	15.0	dB
-1dB Band with	-	12.0	-	MHz
-3dB Band with	-	12.5	-	MHz
Ultimate Rejection Fc-/+9.0MHz	25.0	50.0	-	dB
Passband Variation	-	1.0	1.2	dB
Ambient Temperature	25			°C
Package	SMD-21(7*5) (balance)			

Frequency Response (for reference only)



3. TEST CIRCUIT



L1= 270nH; L2= 220nH

C1= 15pF; L5= 18 nH

L1= 390nH; L2= 51nH

*component values may change depending on board layout

4. DIMENSION

