

规格书编号：

SPEC NO：

# 产品规格书

# SPECIFICATION

CUSTOMER 客户: \_\_\_\_\_  
PRODUCT 产品: \_\_\_\_\_ SAW FILTER \_\_\_\_\_  
MODEL NO 型号: \_\_\_\_\_ HDF1590A6-S6 \_\_\_\_\_  
PREPARED 编制: \_\_\_\_\_ CHECKED 审核: \_\_\_\_\_  
APPROVED 批准: \_\_\_\_\_ D A T E 日期: \_\_\_\_\_ 2013-4-8 \_\_\_\_\_

客户确认 CUSTOMER RECEIVED:		
审核 CHECKED	批准 APPROVED	日期 DATE

无锡市好达电子有限公司  
Shoulder Electronics Limited

## 1. SCOPE

This specification shall cover the characteristics of SAW filter with HDF1590A6 used for the page system.

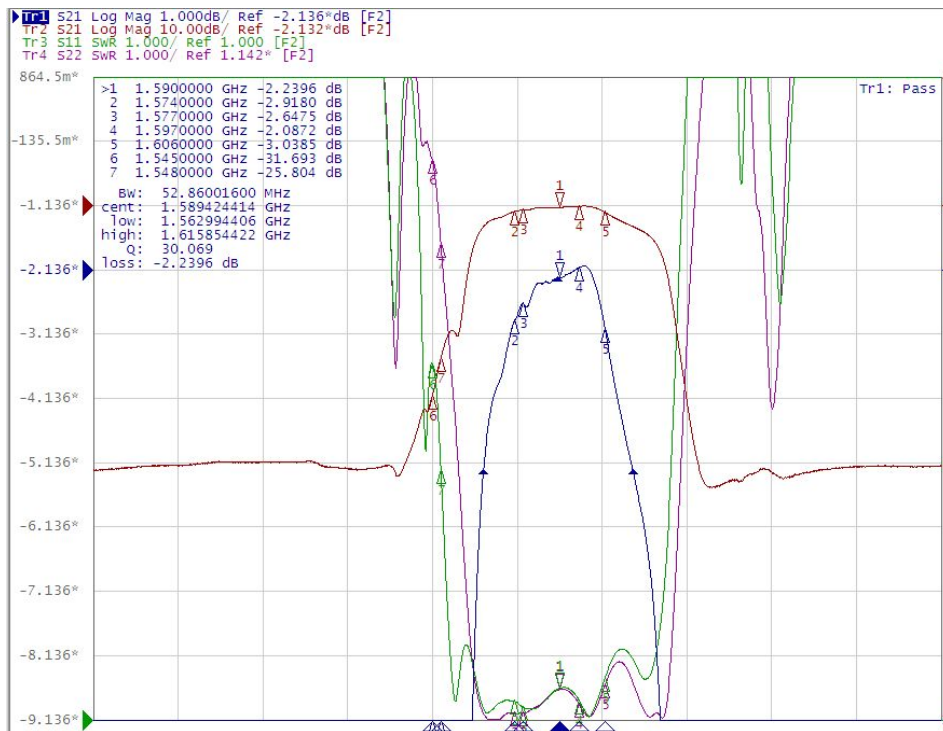
## 2. ELECTRICAL SPECIFICATION

Maximum Input Power	+10dBm
DC voltage	10V
Storage Temperature Range	-40°C to +85°C
Operation Temperature Range	-45°C to +85°C

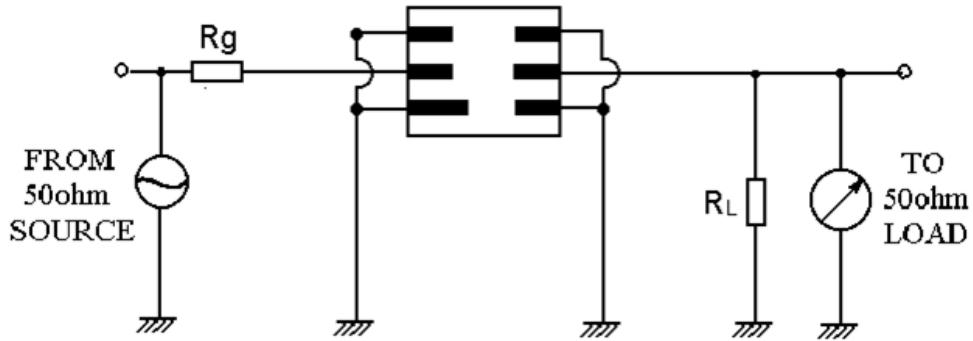
### Electronic Characteristics

Parameter	Min	Typ	Max	Units
Center Frequency		1590		MHz
Insertion Loss (1574~1606MHz)		2.5	3.5	dB
Passband Variation (1574~1606MHz)		1.1	2.0	dB
Ultimate Rejection				dB
500MHz - 1545MHz	30	32		
1548MHz	22	25		
1656MHz - 2000MHz	30	38		
Ambient Temperature	25			°C
Package	SMD-6			

### Response curve



**3. TEST CIRCUIT**



**4. DIMENSION**

