

规格书编号

SPEC NO:

产品规格书

SPECIFICATION

CUSTOMER 客户: _____

PRODUCT 产品: _____ SAW FILTER _____

MODEL NO 型号: _____ HDF1568E-S6 _____

PREPARED 编制: _____ CHECKED 审核: _____

APPROVED 批准: _____ D A T E 日期: _____ 2011-6-17 _____

| | | |
|-------------------------|-------------|---------|
| 客户确认 CUSTOMER RECEIVED: | | |
| 审核 CHECKED | 批准 APPROVED | 日期 DATE |
| | | |

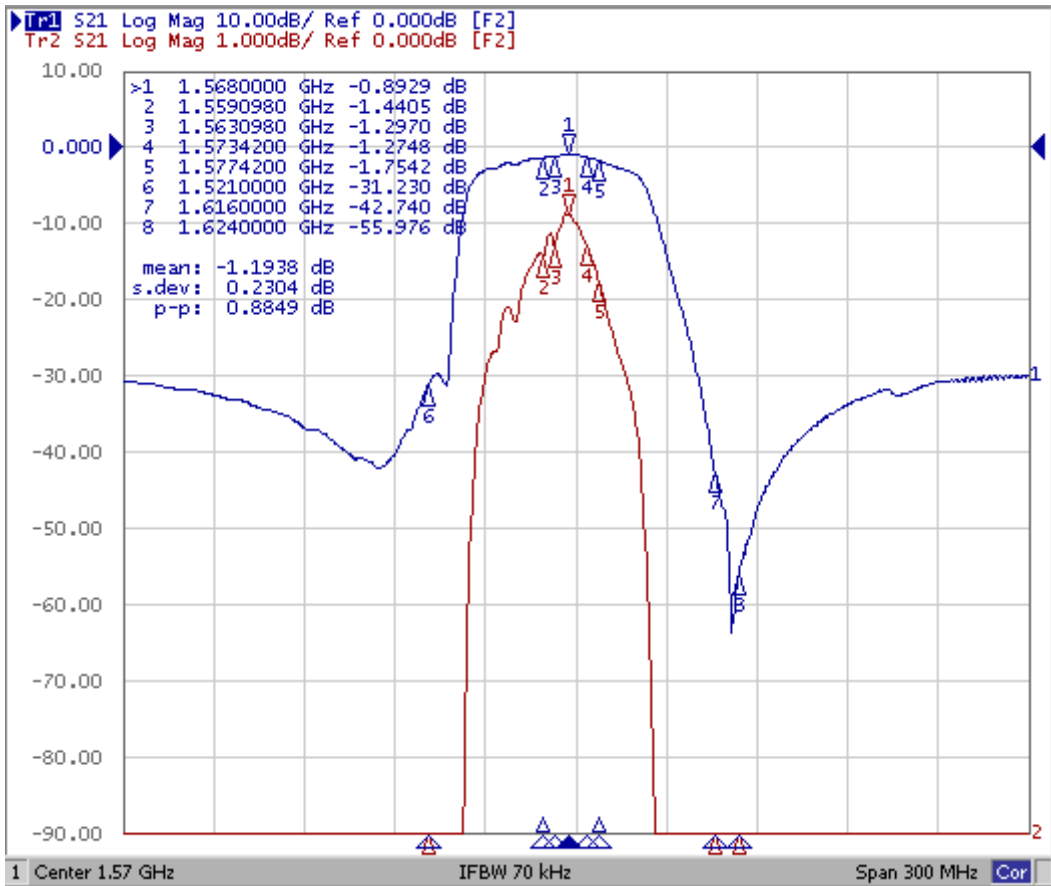
无锡市好达电子有限公司
Shoulder Electronics Limited

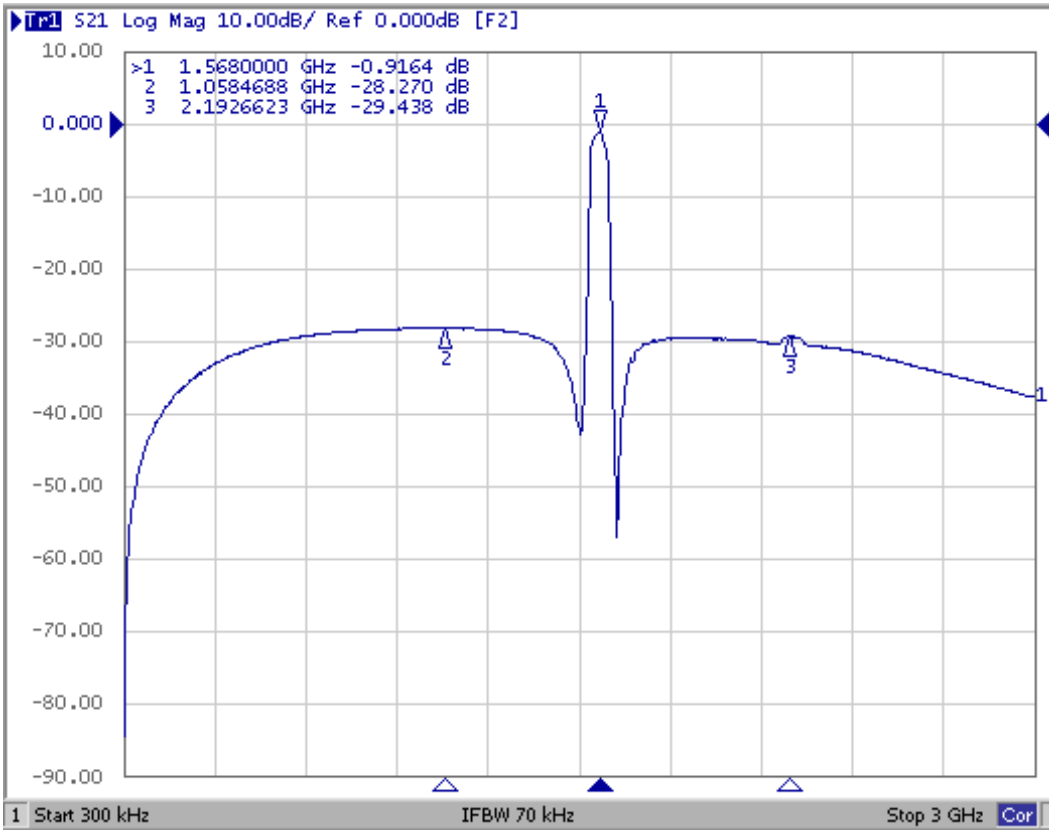
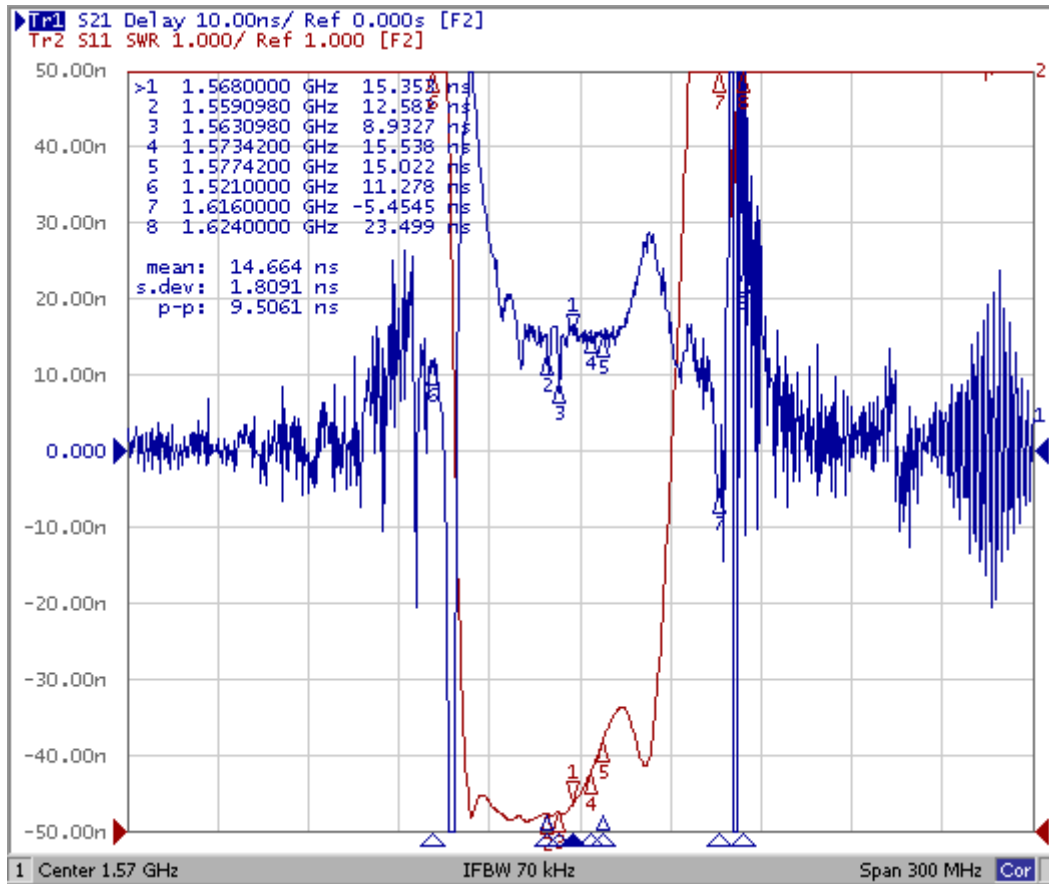
1. ELECTRICAL SPECIFICATION

| | |
|-----------------------|----------------|
| DC Permissive Voltage | 3V |
| AC Voltage Vpp | 10V50Hz/60Hz |
| Operation temperature | -40°C to +85°C |
| Storage temperature | -45°C to +85°C |
| Input power level | 10dBm |

Electronic Characteristics

1-1. Typical frequency response

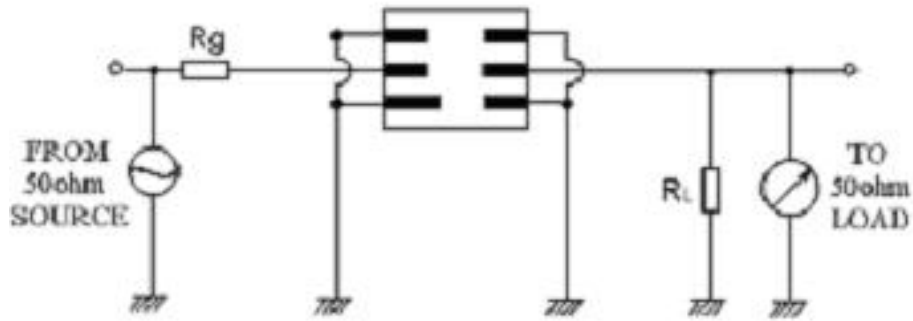




1-2. Electrical characteristics

| Items | Test Condition | Min. | Typ. | Max. | Unit |
|-------------------------|-------------------------|------|------|------|----------|
| Center Frequency | - | - | 1568 | - | MHz |
| Insertion Loss | 1559.098 ~ 1563.098 MHz | - | 1.3 | 2.5 | dB |
| | 1573.420 ~ 1577.420 MHz | - | 1.5 | 2.5 | dB |
| Amplitude Ripple (p-p) | 1559.098 ~ 1563.098 MHz | - | 0.25 | 1.0 | dB |
| | 1573.420 ~ 1577.420 MHz | - | 0.35 | 1.0 | dB |
| Attenuation | DC ~ 820 MHz | 25 | 29 | - | dB |
| | 820 ~ 1521 MHz | 25 | 31.2 | - | dB |
| | 1616 ~ 1624 MHz | 30 | 43 | - | dB |
| | 1624 ~ 3000 MHz | 25 | 29 | - | dB |
| VSWR | 1559.098 ~ 1563.098 MHz | - | 1.5 | 2.5 | - |
| Input/ Output Impedance | - | - | 50 | - | Ω |

2. TEST CIRCUIT



3. DIMENSION

