

规格书编号：

**SPEC NO：**

# 产品规格书

# SPECIFICATION

CUSTOMER 客户： \_\_\_\_\_  
PRODUCT 产品： \_\_\_\_\_ SAW FILTER \_\_\_\_\_  
MODEL NO 型号： \_\_\_\_\_ HDBF29420B21 \_\_\_\_\_  
PREPARED 编制： \_\_\_\_\_ CHECKED 审核： \_\_\_\_\_  
APPROVED 批准： \_\_\_\_\_ D A T E 日期： \_\_\_\_\_ 2014-6-20 \_\_\_\_\_

客户确认 CUSTOMER RECEIVED:		
审核 CHECKED	批准 APPROVED	日期 DATE

无锡市好达电子有限公司  
Shoulder Electronics Limited



## 1. SCOPE

This specification shall cover the characteristics of SAW filter with HDJ29420B21 used for the page system.

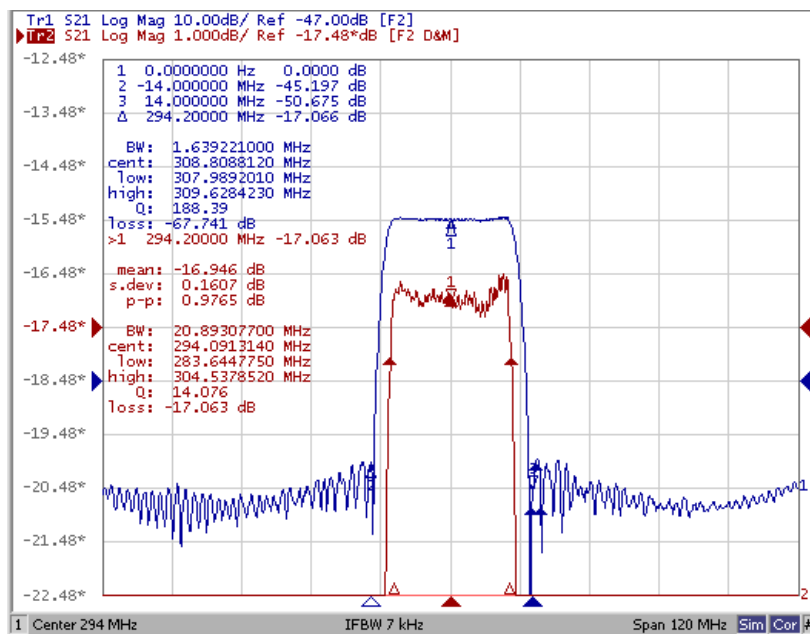
## 2. ELECTRICAL SPECIFICATION

Maximum Input Power	+10dBm
DC voltage	10V
Storage Temperature Range	-55°C to +125°C
Operation Temperature Range	-45°C to +125°C

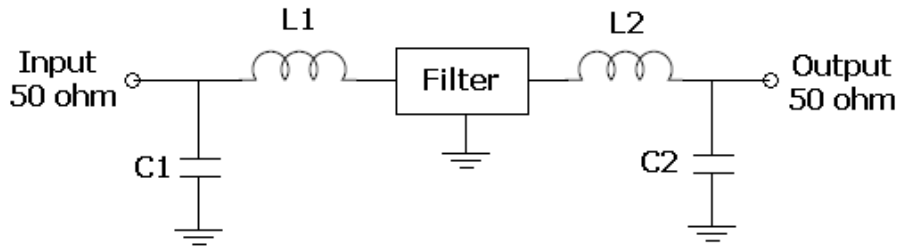
### Electronic Characteristics

Parameter	Min	Typ	Max	Units
Center Frequency	293.9	294.2	294.5	MHz
Insertion Loss	-	19.0	22.0	dB
-1dB Band with	19.5	21.0	22.0	MHz
-40dB Band with	-	28.0	-	MHz
Ultimate Rejection Fc-/±14.0MHz	40.0	50.0	-	dB
Ultimate Rejection Fc-/±31.0MHz	40.0	50.0	-	dB
Passband Variation	-	0.7	1.0	dB
Group delay ripple	-	60	200	ns
Absolute delay	-	0.63	1.6	us
Ambient Temperature	25			°C
Package	SMD-21(7*5)			

### Frequency Response



**3. TEST CIRCUIT (E5071B 虚拟匹配参数)**



L1= 12nH    L2= 15nH  
C1= 33pF    C2= 33pF

\*component values may change depending on board layout

**4.DIMENSION**

