

规格书编号：

SPEC NO：

产品规格书

SPECIFICATION

CUSTOMER 客户： _____
PRODUCT 产品： _____ SAW FILTER _____
MODEL NO 型号： _____ HDBF29412B21 _____
PREPARED 编制： _____ CHECKED 审核： _____
APPROVED 批准： _____ D A T E 日期： _____ 2014-2-26 _____

| | | |
|-------------------------|-------------|---------|
| 客户确认 CUSTOMER RECEIVED: | | |
| 审核 CHECKED | 批准 APPROVED | 日期 DATE |
| | | |

无锡市好达电子有限公司
Shoulder Electronics Limited

更改历史记录 History Record

| 更改日期 Date | 规格书编号 Spec. No. | 产品型号 Part No. | 客户产品型号 Customer No. | 更改内容描述 Modify Content | 备注 Remark |
|--------------|--------------------|------------------|------------------------|--------------------------|--------------|
| | | | | | |
| | | | | | |
| | | | | | |
| | | | | | |
| | | | | | |
| | | | | | |
| | | | | | |
| | | | | | |
| | | | | | |
| | | | | | |
| | | | | | |
| | | | | | |
| | | | | | |
| | | | | | |
| | | | | | |
| | | | | | |
| | | | | | |
| | | | | | |
| | | | | | |

1. SCOPE

This specification shall cover the characteristics of SAW filter with HDJ29412B21 used for the page system.

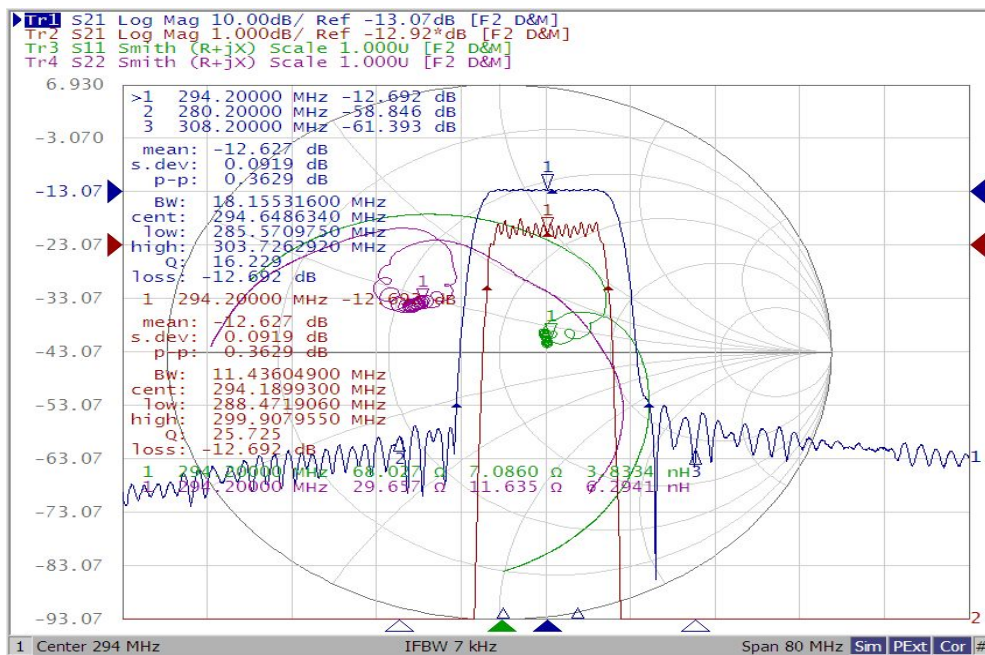
2. ELECTRICAL SPECIFICATION

| | |
|-----------------------------|-----------------|
| Maximum Input Power | +10dBm |
| DC voltage | 10V |
| Storage Temperature Range | -55°C to +125°C |
| Operation Temperature Range | -45°C to +125°C |

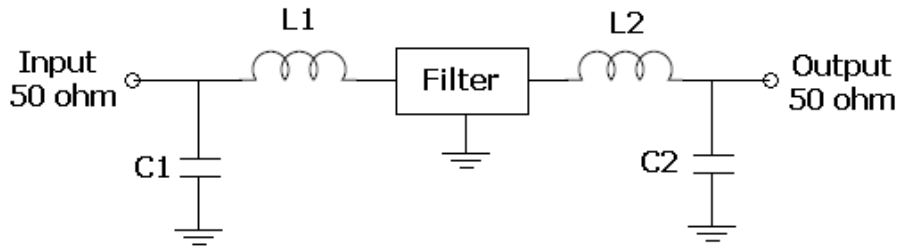
Electronic Characteristics

| Parameter | Min | Typ | Max | Units |
|------------------------------------|-------------|-------|------|-------|
| Center Frequency | - | 294.2 | - | MHz |
| Insertion Loss | - | 13.5 | 15.0 | dB |
| -1dB Band with | - | 11.5 | - | MHz |
| -40dB Band with | - | 18.0 | - | MHz |
| Ultimate Rejection Fc-/+14.0MHz | 40.0 | 50.0 | - | dB |
| Passband Variation | - | 0.5 | 1.0 | dB |
| Group delay ripple | - | 75 | 200 | ns |
| Absolute delay | - | 0.75 | 1.6 | us |
| Ambient Temperature | 25 | | | °C |
| Package | SMD-21(7*5) | | | |

Frequency Response



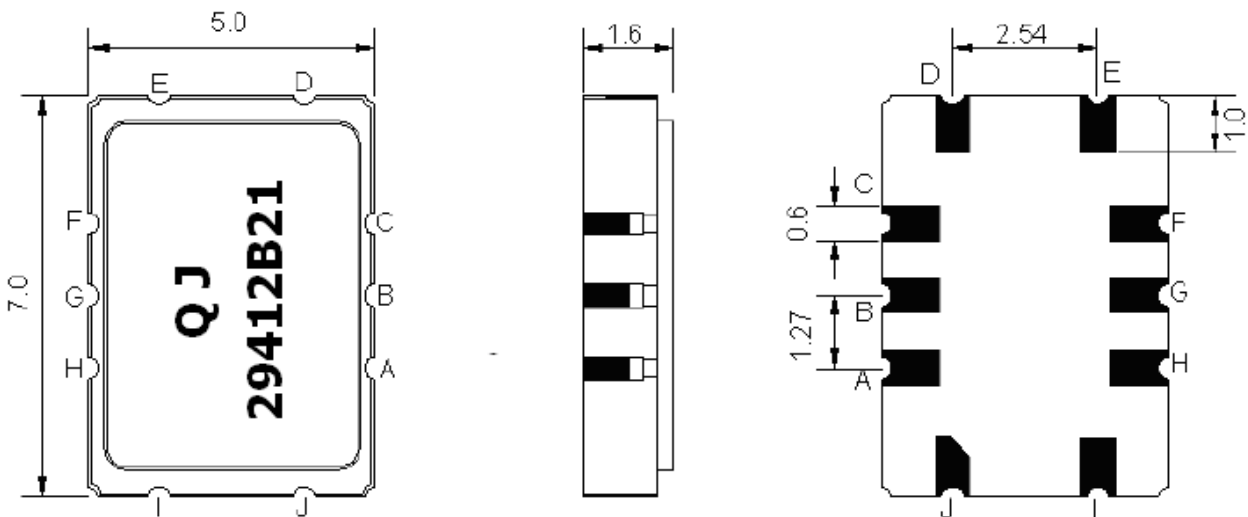
3. TEST CIRCUIT (E5071B 虚拟匹配参数)



L1= 24nH L2= 30nH
C1= 25pF C2= 24pF

*component values may change depending on board layout

4.DIMENSION



| Pin Description | |
|-----------------|--------|
| A,B,C,F,G,H | Ground |
| I | Input |
| J | Ground |
| D | Output |
| E | Ground |