

规格书编号：

SPEC NO：

产品规格书

SPECIFICATION

CUSTOMER 客户： _____
PRODUCT 产品： _____ SAW FILTER _____
MODEL NO 型号： _____ HDBF4620C21-S21 _____
PREPARED 编制： _____ CHECKED 审核： _____
APPROVED 批准： _____ D A T E 日期： _____ 2012-11-15 _____

客户确认 CUSTOMER RECEIVED:		
审核 CHECKED	批准 APPROVED	日期 DATE

无锡市好达电子有限公司
Shoulder Electronics Limited

更改历史记录 History Record

更改日期 Date	规格书编号 Spec. No.	产品型号 Part No.	客户产品型号 Customer No.	更改内容描述 Modify Content	备注 Remark

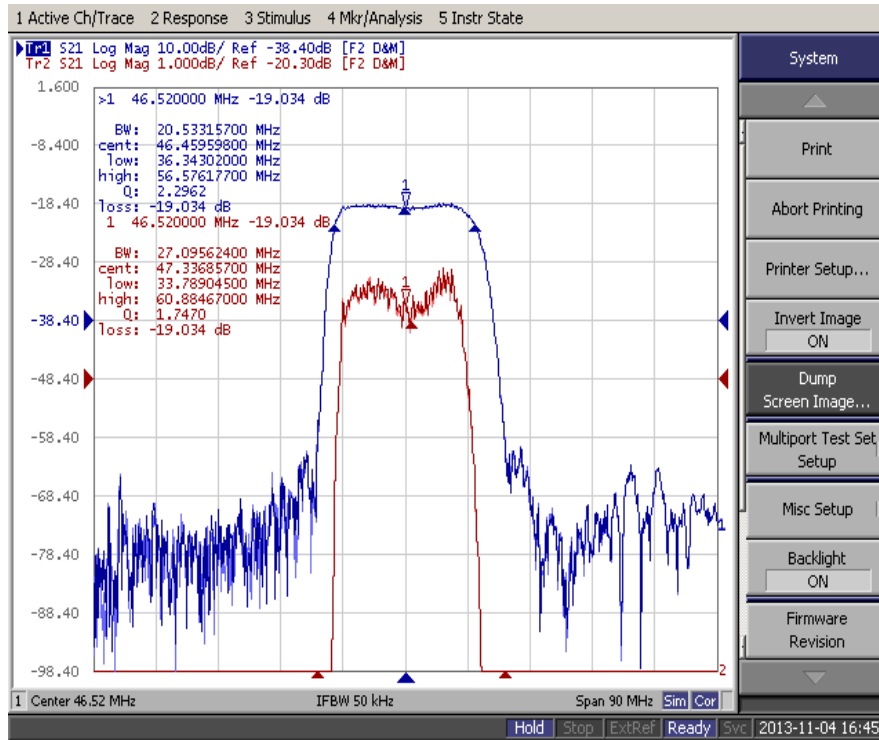
1. ELECTRICAL SPECIFICATION

Maximum Input Power	+10dBm
DC voltage	10V
Storage Temperature Range	-55°C to +95°C
Operation Temperature Range	-45°C to +85°C

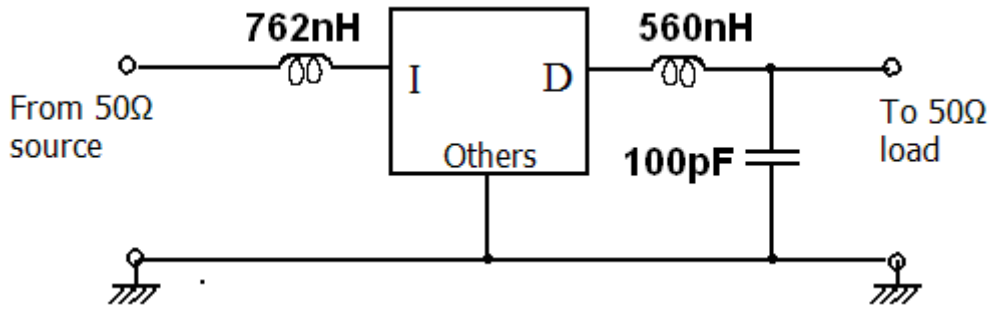
Electronic Characteristics

Parameter	Min	Typ	Max	Units
Center Frequency	46.22	46.52	46.82	MHz
Insertion Loss(46.52MHz)	17.0	19.0	21	dB
-3dB Bandwidth	19.5	20.5		MHz
-40dB Bandwidth		27.0		MHz
Passband Variation		0.5	1.0	dB
Ultimate Rejection				dB
28.52MHz	40	50		dB
64.52MHz	40	50		dB
Ambient Temperature	25			°C
Package	SMD-21 (7*5)			

Frequency Response



2. TEST CIRCUIT



*component values may change depending on board layout

3. DIMENSION

