

规格书编号：

SPEC NO：

产品规格书

SPECIFICATION

CUSTOMER 客户： _____
PRODUCT 产品： _____ SAW FILTER _____
MODEL NO 型号： _____ HDBF04620B21-S21 _____
PREPARED 编制： _____ CHECKED 审核： _____
APPROVED 批准： _____ D A T E 日期： _____ 2012-11-15 _____

客户确认 CUSTOMER RECEIVED:		
审核 CHECKED	批准 APPROVED	日期 DATE

无锡市好达电子有限公司
Shoulder Electronics Limited

1. SCOPE

This specification shall cover the characteristics of SAW filter with HDBF04620B21 used for the page system.

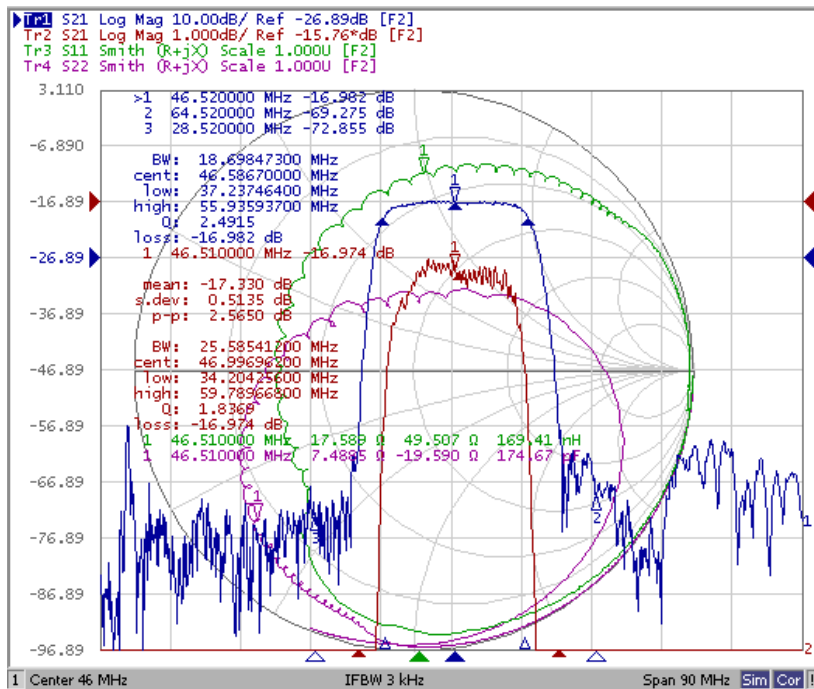
2. ELECTRICAL SPECIFICATION

Maximum Input Power	+10dBm
DC voltage	10V
Storage Temperature Range	-55°C to +95°C
Operation Temperature Range	-45°C to +85°C

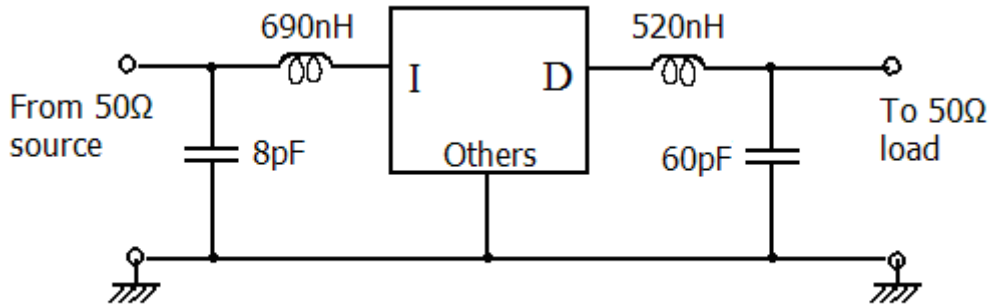
Electronic Characteristics

Parameter	Min	Typ	Max	Units
Center Frequency	46.32	46.52	46.72	MHz
Insertion Loss(46.52MHz)		17	20	dB
-3dB Bandwidth		18.5		MHz
-40dB Bandwidth		25.5		MHz
Passband Variation		1.0	1.5	dB
Ultimate Rejection				dB
28.52MHz	40	50		
64.52MHz	40	50		
Ambient Temperature	25			°C
Package	SMD-24 (1365)			

Frequency Response



2. TEST CIRCUIT



4. DIMENSION

